

# ARABIAN INTERFACE METAL ENCLOSURES

UP TO IP66



# Contents

A. Introduction

B. Applications

C. Product Description

D. Quality & Testing

E. Product Range

F. Metal Enclosures up to IP66 Specifications & Features

G. Single Door Enclosures IP66- SB Range

H. Single Door Enclosures IP66 2 Points Cam Lock

I. Single Door Enclosures IP66 - 3 Points Lock Handle

J. Double Door Enclosures IP54,

K. Stainless Steel Enclosures up to IP66

L. Metering Enclosures up to IP65

M. Transparent Door Enclosures IP65

N. Metal Enclosure Options

- Enclosure with Canopy
- Plinth for Freestanding Enclosures
- Internal Door
- Special Size Enclosures

O. Metal Enclosure Accessories

- Wall Mounting Bracket

# Introduction

Arabian Interface is a trusted leader in the specialized field of professional enclosures and cabinets for industrial applications. Our projects span a wide range from residential and commercial developments to large-scale utility and design/build/commissioning projects.

We understand that working in demanding environments without proper protection can compromise electrical installations. That's why Arabian Interface enclosures are engineered to deliver high ingress protection against dust, dirt, oil, and water, making them highly reliable even in wet and challenging conditions.

## Industries Served

Arabian Interface enclosures are designed to integrate seamlessly with a variety of switchgear and control gear assemblies, ensuring suitability for diverse electrical installations across commercial, industrial, and infrastructure sectors. Our solutions are crafted with precision to meet the toughest performance requirements, supporting industries that demand both safety and efficiency.

## INDUSTRIES SERVED



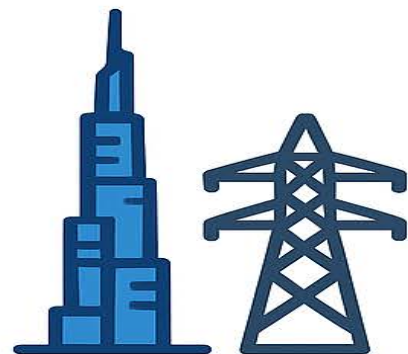
**OIL & GAS**



**CONSTRUCTION**



**TRANSPORT**



**UTILITY**



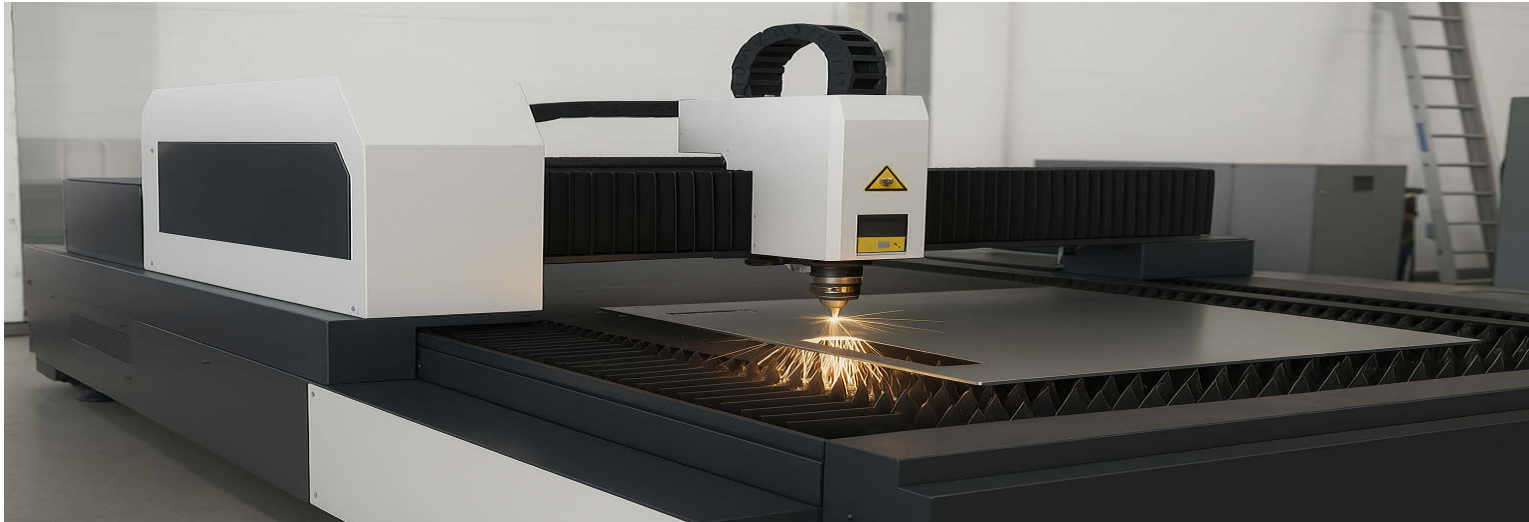
**ARABIAN**  
**INTERFACE**

# Assembly and Production

At [Arabian Interface](#), we take pride in delivering enclosures with fast turnaround times while maintaining superior quality. Our state-of-the-art factory is fully equipped to handle projects of every scale—from customized, small-batch orders to large-scale production for mega infrastructure and utility projects.

## Professional Engineering Support

Our strength lies in the expertise and commitment of our engineering team. With years of experience and extensive industry knowledge, our professionals provide end-to-end support—from design consultation to final execution.



## Applications

Our enclosures are primed, painted, and powder-coated to ensure maximum durability and strength. They provide superior protection against corrosion, humidity, and rust caused by moisture. With a precision-engineered tight seal, Arabian Interface enclosures effectively prevent the entry of dust, dirt, and water, safeguarding panels, wiring, and critical electrical components.

Customized enclosures can be built to your exact specifications, including:

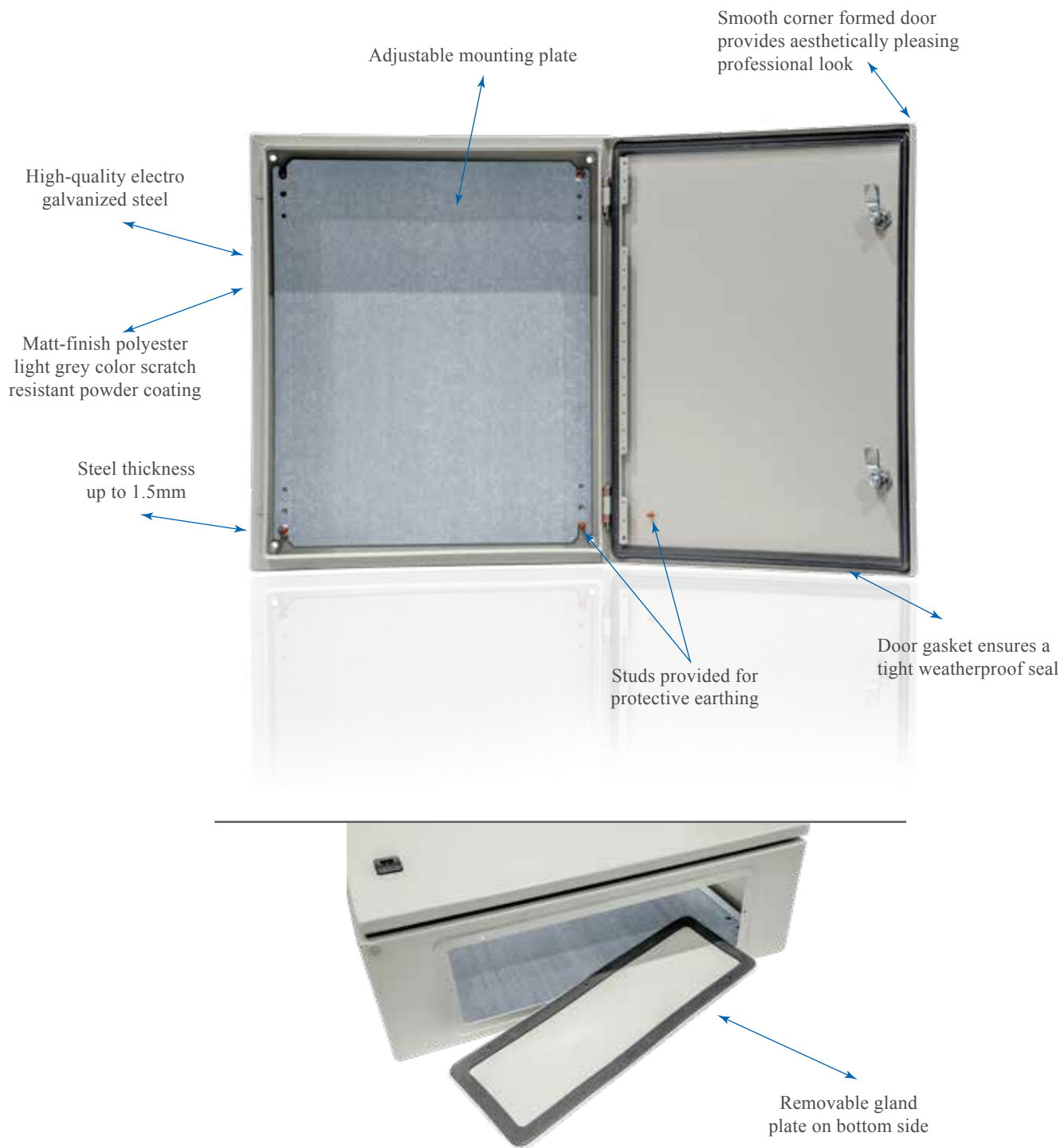
- Sizes
- Wall-mount (flush and surface), floor-mount, and freestanding
- Material thickness
- Door type
- Protective covers and locks
- Windows
- Cut-outs
- Mounting and gland plates
- Colors



# Product Description

Arabian Interface metal enclosures are engineered with precision, featuring seamless corners and a robust outer door that opens smoothly to provide reliable protection. The sleek and clean design of the panel door ensures that the enclosure is not only functional but also an aesthetically presentable part of any building or facility.

Depending on the model, our enclosures are equipped with one or two gland plates at the base for easy cable entry and management..





# Quality and Testing

At [Arabian Interface](#), we ensure that our enclosures are safe, reliable, and built to meet the highest standards for both residential and commercial installations.

Our rigorous program of inspection, verification, and testing monitors every stage of the production process, guaranteeing that each product meets strict quality and performance benchmarks.

All Arabian Interface enclosures are type-tested in accordance with international standards, ensuring a superior level of safety and durability. These certifications demonstrate that our products have been independently tested and verified by recognized experts, reflecting our commitment to compliance with global industry standards and delivering peace of mind to our customers.



## Product Range



Single Door Enclosure



Stainless Steel Enclosure



Double Door Enclosure,



Extendable Enclosure



Glass Door Enclosure

# Metal Enclosures up to IP66



Single Camlock



Double Camlock

## SPECIFICATIONS

- Made of high quality electro-galvanized (EG) steel sheet thickness up to 1.5mm
- Polyester powder coated light grey color RAL7032. Other colors available upon request
- Standard mounting plate 2mm thickness with anti-corrosion protection (hot dipped galvanized steel / Alu Zinc material)
- Type tested in accordance with IEC 60529/62208 standards
- Complies with CE standards
- Degree of protection up to IP66
- Suitable installation for wall & floor mounting

## FEATURES

- Earthing studs are provided on both the enclosure and the door (Figure - 1)
- Formed in place polyurethane gasket for reliable sealing (Figure - 2)
- Corner formed door ensures better weatherproofing and is aesthetically appealing. Special profiled lip for better waterproofing (Figure - 3)
- Easily removable hinges, ideal for changing the door opening direction (for certain sizes)
- Metal keys and locking mechanism for durability (Figure - 4)
- A kit containing assembly hardware and instruction manual is provided with the enclosure



Figure - 1



Figure - 2



Figure - 3



# 1. Single Door Enclosures IP66

The [Arabian Interface](#) is a high-quality single-door metal enclosure, engineered for reliability and ease of use. It is equipped with 1 or 2-point cam locks to ensure secure closure and protection of internal components. It is available in various sizes, with maximum dimensions of up to 800 × 800 mm, making it a versatile solution for a wide range of applications.



## Single Door Enclosures

	ITEM CODE	H	W	D	THICKNESS		NO OF GLAND PLATES BOTTOM
					ENCLOSURE	MOUNTING PLATE	
1	AI-SD-152020	200	200	150	1.2	2.0	1
2	AI-SD-152021	300	200	150	1.2	2.0	1
3	AI-SD-152022	300	300	150	1.2	2.0	1
4	AI-SD-152023	300	200	200	1.2	2.0	1
5	AI-SD-152024	400	300	150	1.2	2.0	1
6	AI-SD-152025	400	300	200	1.2	2.0	1
7	AI-SD-152026	400	400	200	1.2	2.0	1
8	AI-SD-152027	400	600	200	1.2	2.0	1
9	AI-SD-152028	500	400	200	1.2	2.0	1
10	AI-SD-152029	500	400	300	1.2	2.0	1
11	AI-SD-152030	500	500	200	1.2	2.0	1
12	AI-SD-152031	500	500	300	1.2	2.0	1
13	AI-SD-152032	600	400	200	1.2	2.0	1
14	AI-SD-152033	600	400	300	1.2	2.0	1
15	AI-SD-152034	600	500	200	1.2	2.0	2
16	AI-SD-152035	600	500	300	1.2	2.0	1
17	AI-SD-152036	600	600	200	1.2	2.0	1
18	AI-SD-152037	600	600	300	1.2	2.0	1

## 2. Single Door Enclosures IP66

### 2 Points Cam Lock

The **Arabian Interface** Points Range is a single-door metal enclosure designed for enhanced security with a two-point cam locking system. Built for strength and reliability, this range is available in sizes up to 1600 × 1000 mm, offering ample space and robust protection for various industrial and commercial applications.



## Key Features

**Durable Construction** – Manufactured from high-quality sheet steel for strength and longevity.

**Corrosion Resistance** – Powder-coated finish for protection against rust, humidity, and harsh environments.

**Ease of Installation** – Pre-punched mounting holes and optional gland plates for cable entry.

**Enhanced Security** – Two-point cam locks provide superior protection for sensitive equipment.

**Versatility** – Suitable for electrical distribution, automation, and industrial control applications.

## Compliance & Standards

Type-tested as per IEC/EN standards for safety and performance

Designed for IP-rated protection against dust and water ingress



# Single Door Enclosures - 2 Points Cam Lock

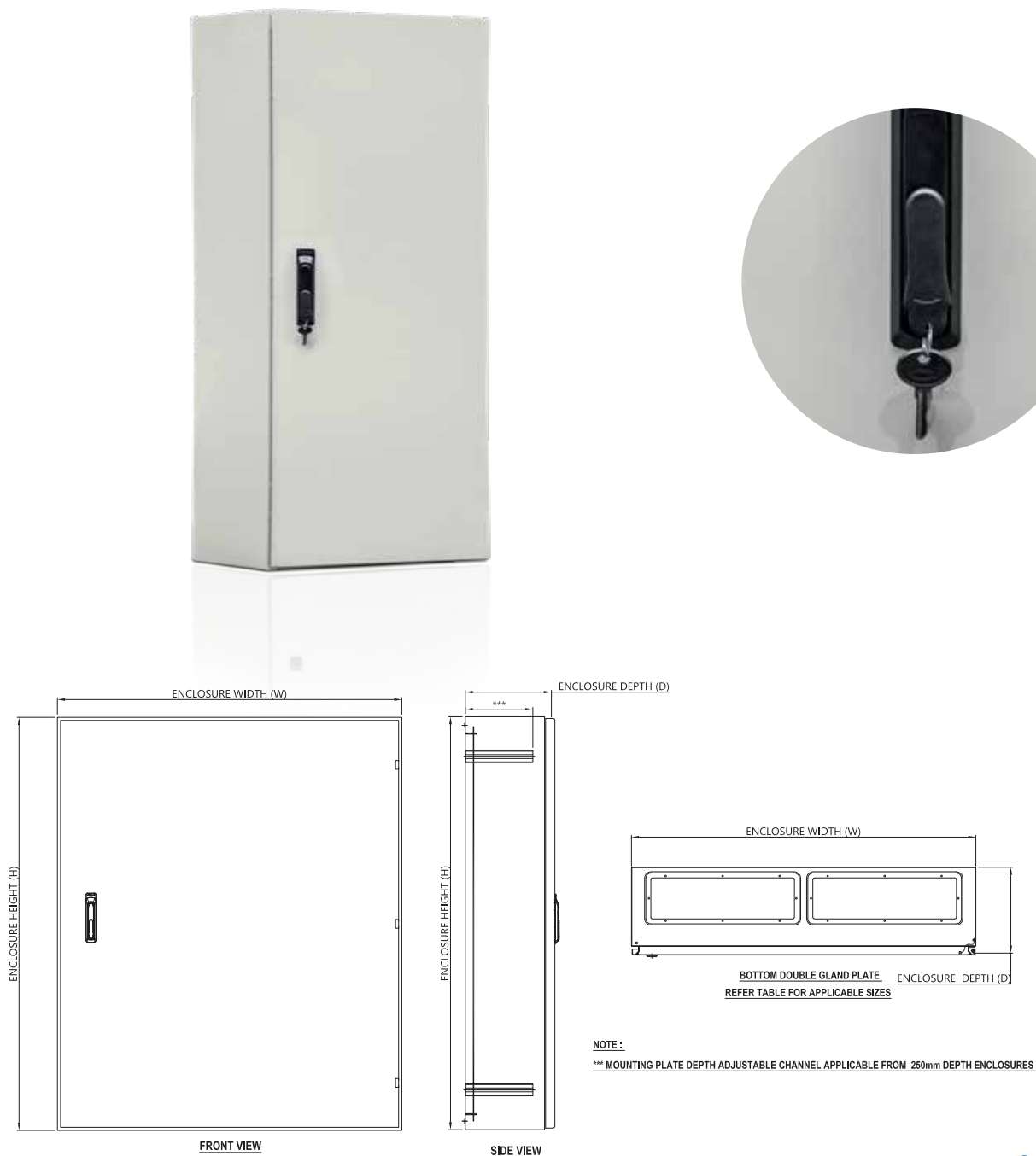
ITEM CODE	H	W	D	THICKNESS		NO OF GLAND PLATES BOTTOM
				ENCLOSURE	MOUNTING PLATE	
1 AI-SD-152021D	1000	600	200	1.5	2.0	1
2 AI-SD-152022D	1000	600	300	1.5	2.0	2
3 AI-SD-152023D	1000	600	400	1.5	2.0	1
4 AI-SD-152024D	1000	600	250	1.5	2.0	1
5 AI-SD-152025D	1000	800	200	1.5	2.0	1
6 AI-SD-152026D	1000	800	400	1.5	2.0	1
7 AI-SD-152027D	1000	1000	300	1.5	2.0	2
8 AI-SD-152028D	1000	1000	250	1.5	2.0	2
9 AI-SD-152029D	1200	600	200	1.5	2.0	2
10 AI-SD-152030D	1200	600	300	1.5	2.0	2

### 3. Single Door Enclosures IP66

#### 3 Points Lock Handle

The [Arabian Interface](#) 3 Points Range is a single-door metal enclosure designed for applications that require maximum security and durability. Equipped with a three-point lock handle system, it ensures a firm and reliable closure, offering greater protection against unauthorized access and environmental factors.

This range is available in sizes up to  $2000 \times 1000$  mm, making it an ideal choice for large-scale industrial, commercial, and utility applications where strength, safety, and capacity are critical.



# Single Door Enclosures - 3 Points Lock Handle

ITEM CODE	H	W	D	THICKNESS		NO OF GLAND" PLATES BOTTOM
				ENCLOSURE	MOUNTING PLATE	
1 CKR/HU/4: 32	1000	800	200	1.5	2.0	2
2 CKR/HU/53232	1000	800	522	1.5	2.0	2
3 CKR/HU/473232	1000	1000	472	1.5	2.0	2
4 CKR/HU/53234	1400	1000	300	1.5	2.0	2
5 CKR/HU/53236	1600	3220	520	1.5	2.0	2
6 CKR/HU/63236	1600	1000	622	1.5	2.0	2
7 CKR/HU/4836	1600	800	400	1.5	2.0	2
8 CKR/HU/4: 36	1400	: 00	400	1.5	2.0	2
9 CKR/HU/5: 36	1400	: 22	500	1.5	2.0	2
10 CKR/HU/6: 36	1400	: 00	622	1.5	2.0	2
11 CKR/HU/53238	1800	3200	500	1.5	2.0	2
12 CKR/HU/63238	1800	3222	622	1.5	2.0	2
13 CKR/HU/4838	3822	822	422	1.5	2.0	2
14 CKR/HU/4: 38	1800	800	200	1.5	2.0	2
15 CKR/HU/5: 38	1800	800	522	1.5	2.0	2
16 CKR/HU/6: 38	1800	800	622	1.5	2.0	2
17 CKR/HU/5323:	1: 00	3222	522	1.5	2.0	2
18 CKR/HU/6323:	3: 22	3222	622	1.5	2.0	2
19 CKR/HU/483:	3: 22	822	422	1.5	2.0	2
20 CKR/HU/583:	3: 22	822	522	1.5	2.0	2
21 CKR/HU/4: 32	1600	1000	400	1.5	2.0	2



## 4. Double Door Enclosures IP54 3 Points Lock Handle

The [Arabian Interface](#) Double door Enclosure is a robust double-door metal enclosure engineered for demanding applications that require both capacity and protection. Designed with a three-point lock handle system, it ensures secure closure and reliable safety for internal equipment.

With protection ratings of up to IP54, the SBY Range safeguards against dust, dirt, and water splashes, making it suitable for a wide range of environments. Available in sizes up to 2000 × 1200 mm, it is the perfect solution for large industrial installations, utilities, and commercial projects requiring high durability and accessibility.



# Double Door Enclosures 3 Points Lock Handle

ITEM CODE	H	W	D	THICKNESS		NO OF GLAND PLATES BOTTOM
				ENCLOSURE	MOUNTING PLATE	
1 AI-WM-SS-31010	1000	1000	300	1.5	2.0	2
2 AI-WM-SS-31012	1200	1000	300	1.5	2.0	2
3 AI-WM-SS-41012	1200	1000	400	1.5	2.0	2
4 AI-WM-SS-41212	1200	1000	400	1.5	2.0	2
5 AI-WM-SS-31014	1400	1000	300	1.5	2.0	2
6 AI-WM-SS-41014	1400	1000	400	1.5	2.0	2
7 AI-WM-SS-31214	1400	1200	300	1.5	2.0	2
8 AI-WM-SS-41214	1400	1200	400	1.5	2.0	2
9 AI-WM-SS-31016	1600	1000	300	1.5	2.0	2
10 AI-WM-SS-41016	1600	1000	400	1.5	2.0	2
11 AI-WM-SS-31216	1600	1200	300	1.5	2.0	2
12 AI-WM-SS-41216	1600	1200	400	1.5	2.0	2
13 AI-WM-SS-31018	1800	1000	300	1.5	2.0	2
14 AI-WM-SS-41018	1800	1000	400	1.5	2.0	2
15 AI-WM-SS-31218	1800	1200	300	1.5	2.0	2
16 AI-WM-SS-41218	1800	1200	400	1.5	2.0	2
17 AI-WM-SS-41020	2000	1000	400	1.5	2.0	2
18 AI-WM-SS-41220	2000	1200	400	1.5	2.0	2
19 AI-WM-SS-31016	1600	1000	300	1.5	2.0	2

## 7. Transparent Door Enclosures IP65

The [Arabian Interface](#) Transparent Door Enclosures are specially designed for the control and automation industry, where monitoring and accessibility are critical. Each enclosure is fitted with a polycarbonate transparent door, allowing operators and technicians to visually inspect and monitor internal control devices without opening the enclosure, ensuring both safety and efficiency.

Arabian Interface offers two product ranges within this category:

Models available with dimensions up to 800 × 800 mm

Extended range available with dimensions up to 1600 × 1000 mm

These enclosures combine the strength of metal construction with the convenience of clear visibility, making them an excellent choice for industrial and commercial control applications.



### FEATURES

- Ingress protection IP65
- Made of electrogalvanized steel up to 1.5 mm thickness, Polyester powder coated
- Transparent door suitable for outdoor applications
- UV resistant, flame retardant polycarbonate transparent door pane
- Steel mounting plate of 2mm thickness, hot dipped galvanized steel / Alu Zinc material
- Padlocking arrangement (loose accessory only)

# Transparent Door Enclosures – SBT Range

ITEM CODE	H	W	D	THICKNESS		
				ENCLOSURE	MOUNTING PLATE	TRANSPARENT WINDOW (POLYCARBONATE)
1 AI-TDE-233	300	300	200	1.2	2.0	3.0
2 AI-TDE-234	400	300	200	1.2	2.0	3.0
3 AI-TDE-244	400	400	200	1.2	2.0	3.0
4 AI-TDE-264	400	600	200	1.2	2.0	3.0
5 AI-TDE-364	400	600	300	1.2	2.0	3.0
6 AI-TDE-245	500	400	200	1.2	2.0	3.0
7 AI-TDE-345	500	400	300	1.2	2.0	3.0
8 AI-TDE-255	500	500	200	1.2	2.0	3.0
9 AI-TDE-355	500	500	300	1.2	2.0	3.0
10 AI-TDE-246	600	400	200	1.2	2.0	3.0
11 AI-TDE-346	600	400	200	1.2	2.0	3.0
12 AI-TDE-256	600	500	200	1.2	2.0	3.0
13 AI-TDE-356	600	500	300	1.2	2.0	3.0
14 AI-TDE-366	600	600	300	1.2	2.0	3.0
15 AI-TDE-266	600	600	200	1.2	2.0	3.0
16 AI-TDE-248	800	400	200	1.2	2.0	3.0
17 AI-TDE-348	800	400	300	1.2	2.0	3.0
18 AI-TDE-268	800	600	200	1.2	2.0	3.0
19 AI-TDE-368	800	600	300	1.2	2.0	3.0
20 AI-TDE-468	800	600	400	1.2	2.0	3.0
21 AI-TDE-288	800	800	200	1.2	2.0	3.0
22 AI-TDE-388	800	800	300	1.2	2.0	3.0

# Metal Enclosure Options & Accessories

At [Arabian Interface](#), our metal enclosures are designed and manufactured to meet a wide spectrum of customer requirements while ensuring suitability for diverse applications. Every enclosure is built with a focus on durability, safety, and ease of installation, making them adaptable to both standard and specialized projects.

We understand that each client may have unique operational needs, which is why our enclosures can be customized with a variety of design options upon request. Whether it's adjustments in size, finish, or added features, our engineering and production teams are equipped to deliver tailored solutions that align perfectly with your project specifications.

From enhanced locking systems and protective covers to special mounting arrangements and cut-outs, Arabian Interface enclosures provide the flexibility required for demanding environments. This adaptability ensures that our products are not only reliable in performance but also optimized to suit the practical challenges of modern industrial and commercial installations.



### 3. Internal Door

For projects that require an added layer of safety and organization, [Arabian Interface](#) enclosures can be equipped with an internal door. This feature allows operators to access and monitor meters, switches, or indicators mounted on the inner door without exposing the main wiring and live components.

By creating a barrier between the operator and internal circuits, the internal door enhances safety, reduces the risk of accidental contact, and keeps the main installation protected from dust and environmental exposure during routine checks. It also provides an excellent solution for segregating control devices from power equipment within the same enclosure.



### 4. Special Size Enclosures

At [Arabian Interface](#), our metal enclosures are fully customizable and can be manufactured in a wide range of sizes to suit diverse applications across industries. We prioritize working closely with our customers to understand their specific requirements, ensuring that each enclosure is tailored for optimal performance, durability, and safety. With flexible production options, we can accommodate both small-scale and large-scale orders, maintaining high-quality standards throughout. Our enclosures are designed to support seamless integration with various equipment, offering reliable protection and long-term value for industrial, commercial, and specialized applications.





# Metal Enclosure Options & Accessories

## Accessories

At [Arabian Interface](#), our metal enclosures come with a comprehensive range of optional, user-friendly accessories designed to save time and reduce labor during project execution. Customers can select the accessories that best suit their specific enclosure requirements, ensuring seamless functionality and convenience.

### 1. Wall Mounting Bracket

For easy on-site installation, our metal enclosures can be equipped with wall mounting brackets. These brackets are engineered to securely and safely hang the enclosure on walls, providing stability while simplifying the installation process.

### 2. Gland Box

Our optional gland boxes allow for organized cable entry and exit, protecting cables from strain and environmental factors. They are designed to integrate seamlessly with the enclosure, ensuring both safety and ease of maintenance for electrical and industrial applications.



## 8. Baying Enclosure

Arabian Interface's Low Voltage Baying Enclosures are designed for electrical power distribution, control, and automation systems. They are typically installed downstream of transformers or generators and house main and branch circuit breakers, providing organized and efficient electrical management. These enclosures are engineered for durability, safety, and ease of maintenance, ensuring reliable performance in a variety of industrial and commercial applications. Their modular design allows for flexible configuration and seamless integration with other enclosures, optimizing space and enhancing operational efficiency.



### SPECIFICATIONS

- Constructed from premium-quality electro-galvanized sheet metal for superior strength and durability
- Finished with polyester powder coating in RAL7032 coarse texture for long-lasting protection
- Mounting plate manufactured from 2.0 mm hot-dipped galvanized steel
- Plinth/Base fabricated from 3.0 mm electro-galvanized steel for enhanced stability
- Framework built with 2.0 mm hot-dipped galvanized steel for robust structural support
- Doors made from 2.0 mm electro-galvanized steel, ensuring security and durability
- Fully compliant with IEC 60529 and IEC 62208 international standards
- Rated with Ingress Protection IP55 for dust and water resistance
- Custom color options available upon request to match project requirements



# Product Breakdown



Door Handle



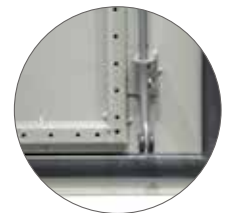
Lifting hook



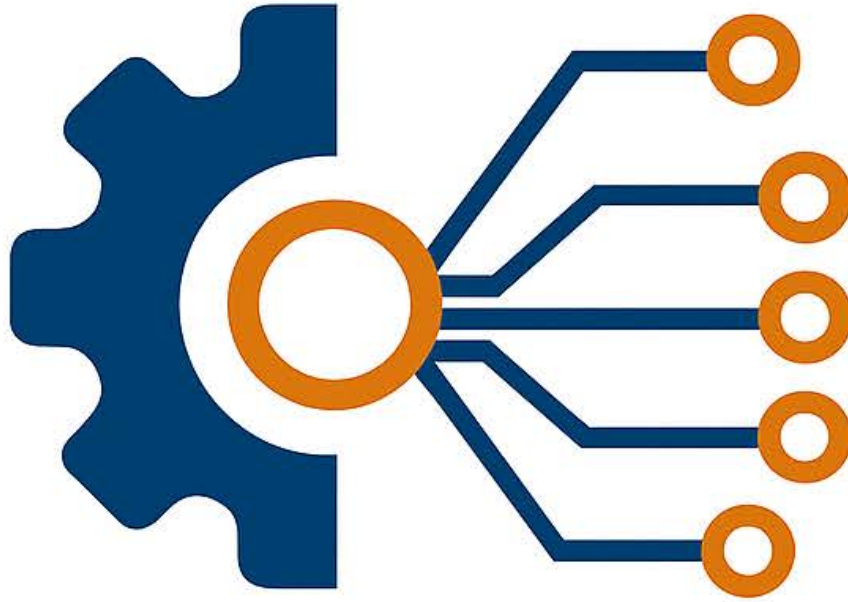
3-Point lock system



Earthing



Bottom Lever



# ARABIAN INTERFACE

**FOR CUSTOMIZED ENCLOSURE  
SOLUTIONS, CONTACT US TODAY.**



**sales@afocint.com**



**+971 545025554**



**www.afocint.com**



**Plot no 628, Umme Derra, 128786,  
Umm Al Quwain**

